



A publication of Tucker Sno-Cat® Corporation  
NO SNOW TOO DEEP

Made in the USA since 1942  
NO ROAD TOO STEEP

December 2018 Volume 10 Issue 12

## ONLINE STORE

## JASON SAYS...



## FRONT ENGINE TOUGH

## USED VEHICLES

## DEMO'S FOR SALE

### ONLINE STORE



Arriving just in time for Christmas...Tucker Sno-Cat® Flask and Tumbler. Limited quantity available so pre-order yours today. Estimated ship date 12/7/2018. Looking for the perfect gift for that special lady? No need to look any further, we've got you covered. Tucker Sno-Cat® scarves, fleece headbands and knit beanies make great stocking stuffers. Go to [www.sno-cat.com](http://www.sno-cat.com) or [www.classiccatsbytucker.com](http://www.classiccatsbytucker.com) to order.

Tucker Sno-Cat® Corporation  
2872 S. Pacific Hwy  
Medford, OR 97501

**BUY AMERICAN**  
  
**BUY ORANGE**

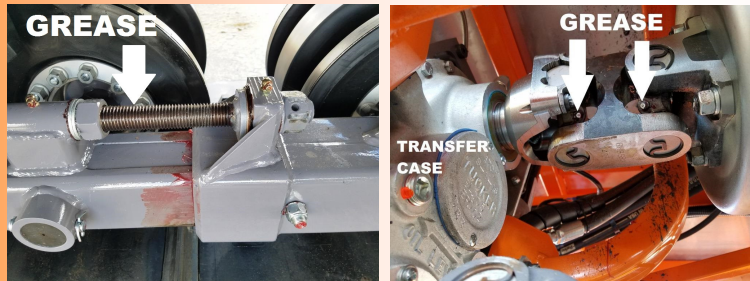
[www.sno-cat.com](http://www.sno-cat.com)  
(541) 779-3731  
Toll Free (866) 766-2281

# JASON SAYS.....

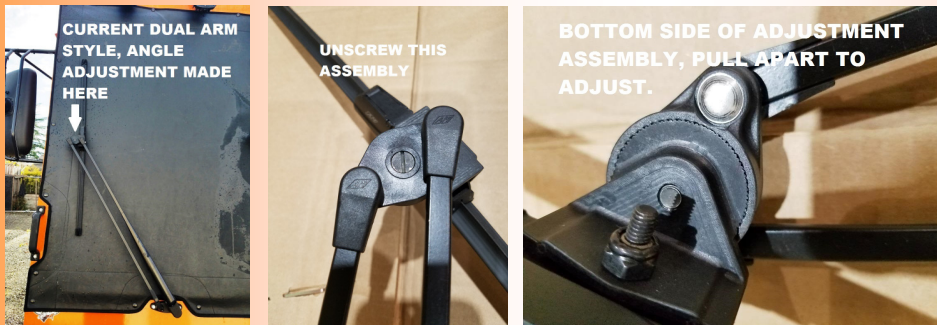
Jason Says....A couple of things we noticed from servicing this fall, dirty engine compartments and lack of grease. I also wanted to point out adjusting windshield wiper blade angles.



Running these tracked vehicles in the dirt kicks up a lot of dust, the engine compartment and air filters get dirty fast so this means more aggressive servicing is required. If your engine compartment looks like the one on the left then check the air filter right away.



A couple of common areas we noticed that were missing grease:  
The open adjusting thread rods pictured on the far left, a brush works well on this.  
The upper drive line grease fittings on the near left photo. If you are having a hard time getting a regular grease gun fitting on this then use a needle nose hose fitting.



Photos on the left show where and how to adjust the blade angle for the current dual arm windshield wiper system.

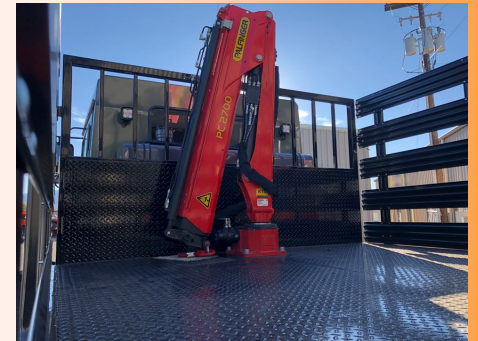
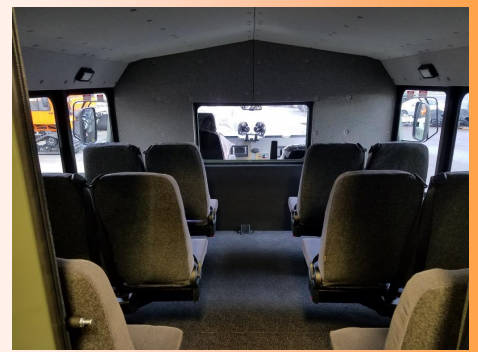


Photos on the left show where and how to adjust the blade angle for the older dual arm windshield wiper system.



# FRONT ENGINE TOUGH

The 1642 Front Engine Series is now available with a channel frame and Tier 4 Final emission package. The below pictures are of the first ones out of production. This vehicle will be fitted with side cat walks, rear flat bed, and a hydraulic knuckle boom or with a 12-Passenger rear cabin. Also pictured is the lightweight tracked trailer.





# Used For Sale



2016 Model 2000E-26-6 Tucker-Terra® (CONVERTIBLE TO 5-PASS)  
173 HP Cummins w/Allison Transmission, 10' 12-Way Blade, Raised Carriers, Brush Guards, Lower Corner Lights, 1760 Hours, Air Lockers, Spotlight, Rear Tool Box, Brush Guards, 100 Gallon Fuel Tank, Webasto Heater, Heated Front Windshield, 1904 Hours



2013 Model 2000E-26-6 Tucker-Terra® (CONVERTIBLE TO 5-PASS)  
173 HP Cummins w/Allison Transmission, Raised Carriers, Brush Guard, Lower Corner Lights Bottom Door Windows,  
10' 12-Way Blade, Air Lockers, Brush Guards, 100 Gallon Fuel Tank, 1891 Hours

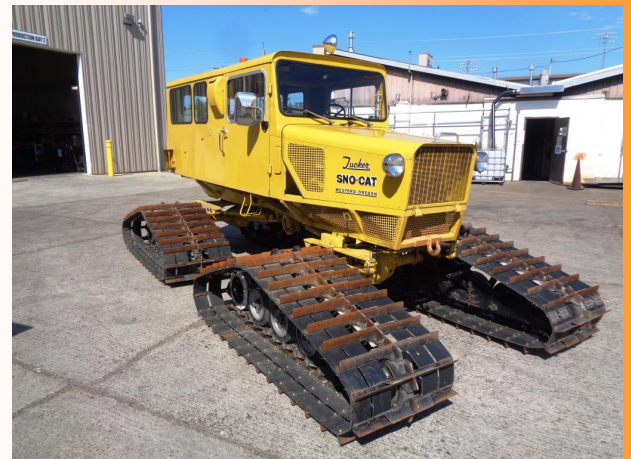


(2 ea) 2013 Model 2000E-26-6 Tucker-Terra® (CONVERTIBLE TO 5-PASS)  
173 HP Cummins w/Allison Transmission, 8' 6-Way Blade, Raised Carriers, Brush Guard, Lower Corner Lights Bottom Door Windows, 1760 Hours



2012 Model 2000E-26-6 Tucker-Terra® (CONVERTIBLE 5-PASS)  
173 HP Cummins w/Allison Transmission, 8' 6-Way Blade, Raised Carriers, Brush Guard, Lower Corner Lights, Bottom Door Windows, 1232 Hours

Our newest addition, very nice, all original 1978 Year, 8-Passenger, Model 1643, very low usage. Call us about this one or any of the other older Sno-Cats® Call Clyde for more information. 541-779-3731



# Demos For Sale

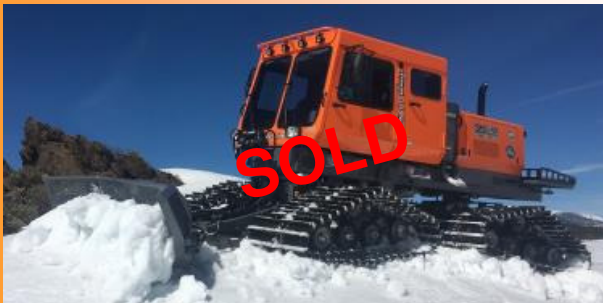
If you are interested in purchasing a demonstrator please contact our sales department. We manufacture demo units for both testing and demonstrations. Purchasing a demonstrator can be beneficial. We sell our demonstrators at a discounted price yet still offer the factory warranty. Currently we have the following demo's available for immediate delivery!



**2018 2000XL Tier 4F, 4-Pass,  
6-Way Blade, 26" Rubber Tracks  
AVAILABLE SPRING 2019**



**2016 2000XL Tier 4i, 4-Pass,  
6-Way Blade, 26" Rubber Tracks**



**2017 2000E  
Tier 4i, 5-  
Pass  
Groomer-  
Utility Ready  
12-Way  
Blade, 38"  
Steel Tracks**



**2017 2000G  
Tier 4i , 5-  
Pass  
Groomer,  
10' Tiller,  
Drag  
Ready**

**10k Demo Trailer  
Empty Weight 1780 lbs.  
Dual Axles w/ Electric Brakes  
Used Two Seasons, Setup for  
Rubber Track**

