

TUCKER

SNO-CAT® CORPORATION

NO SNOW TOO DEEP. NO ROAD TOO STEEP.

Volume 17
Issue 3
MARCH 2025



FOUR-ON- THE-SNOW NEWSLETTER



History: SWISS ALPS
Tucker Gear: ARCTIC CREW BY MATTEL®
Service Department: FLUID LEVELS
Focus On Features: SEATS

FOUR-ON-THE-SNOW NEWSLETTER

NO SNOW TOO DEEP...NO ROAD TOO STEEP

Volume 17 Issue 3 · March 2025



Established in 1942 by Emmitt Tucker Sr., Tucker Sno-Cat® is known worldwide for their four-tracked design, excellent performance, and efficiency. The original manufacturer of over-snow transportation, Tucker Sno-Cat® vehicles provide the ultimate traction advantage in steep terrain, while leaving a gentle footprint.



Want to see more classics?
Check out our Classic Sno-Cat® pages on
Facebook, Instagram and YouTube.
(Featured: Classic Tucker Sno-Cat®
in the Swiss Alps)



G E A R

Matchbox® Mission Force Arctic Crew by Mattel®

**4-Pack Expedition Polar Rescue
Includes a Tucker Sno-Cat®,
Transport Helicopter, Polar
Thunder V16, and a Snow
Explorer Vehicle**

***Limited Edition/Not Available In
Stores**

SHOP



Focus on Features: SEATS

Front seats are an often overlooked but essential feature, especially for operators who spend long hours running groomers or transporting to remote locations. Over the years, we've offered a variety of seat options, including suspension, airbag, standard seats with armrests, and standard cloth seats. All of our seats are high-quality, with some even offering premium features like heating and armrest controls for added comfort!

Considering your needs and budget, we can tailor your seat options to suit your specific requirements.





Service Department Notes: **FLUID LEVELS**

Maintaining the right fluid levels in your Tucker Sno-Cat® vehicle is essential for keeping it running smoothly, especially when it's working hard in demanding conditions. Regularly checking fluids like the transmission and transfer case fluids ensure top performance and prevents costly repairs.

Transmission Fluid

Transmission fluid keeps everything running smoothly by lubricating gears and preventing overheating. Since the transmission works hard in tough environments, regular checks can prevent issues like rough shifting and potential failure.

Transfer Case Fluid

The transfer case fluid lubricates critical components and ensures power is properly distributed. Keeping this fluid in good condition avoids problems such as grinding noises.

Why It Matters

Heavy use puts extra stress on these fluids, which can break down over time. By checking them regularly, you'll catch small issues early, ensuring your Tucker Sno-Cat® stays reliable and efficient, even in the toughest conditions.



FOUR-ON-THE-SNOW NEWSLETTER

NO SNOW TOO DEEP...NO ROAD TOO STEEP

Volume 17 Issue 3 · March 2025

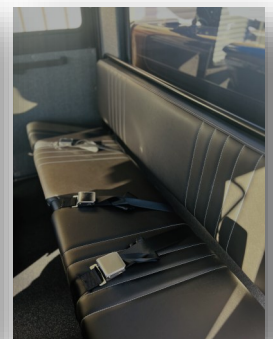


FOR SALE

Pre-Owned

**2018 2000E-26-6
TUCKER-TERRA®
NOW AVAILABLE**

- 5 Passenger
- 1769 Hours
- Cummins 6.7L 173HP (NO DEF)
- Allison Transmission
- HD Cushman Transfer Case
- Aluminum Differential Covers
- Large Pinion Bearing Upgrade F&R
- ARB Air Locking Differentials
- 9' 12-Way Grooming Blade
- Triple Rear Hydraulics
- Rear Toolbox
- Lower Corner Lights
- Roof Mounted Spotlight
- Webasto Coolant Heater

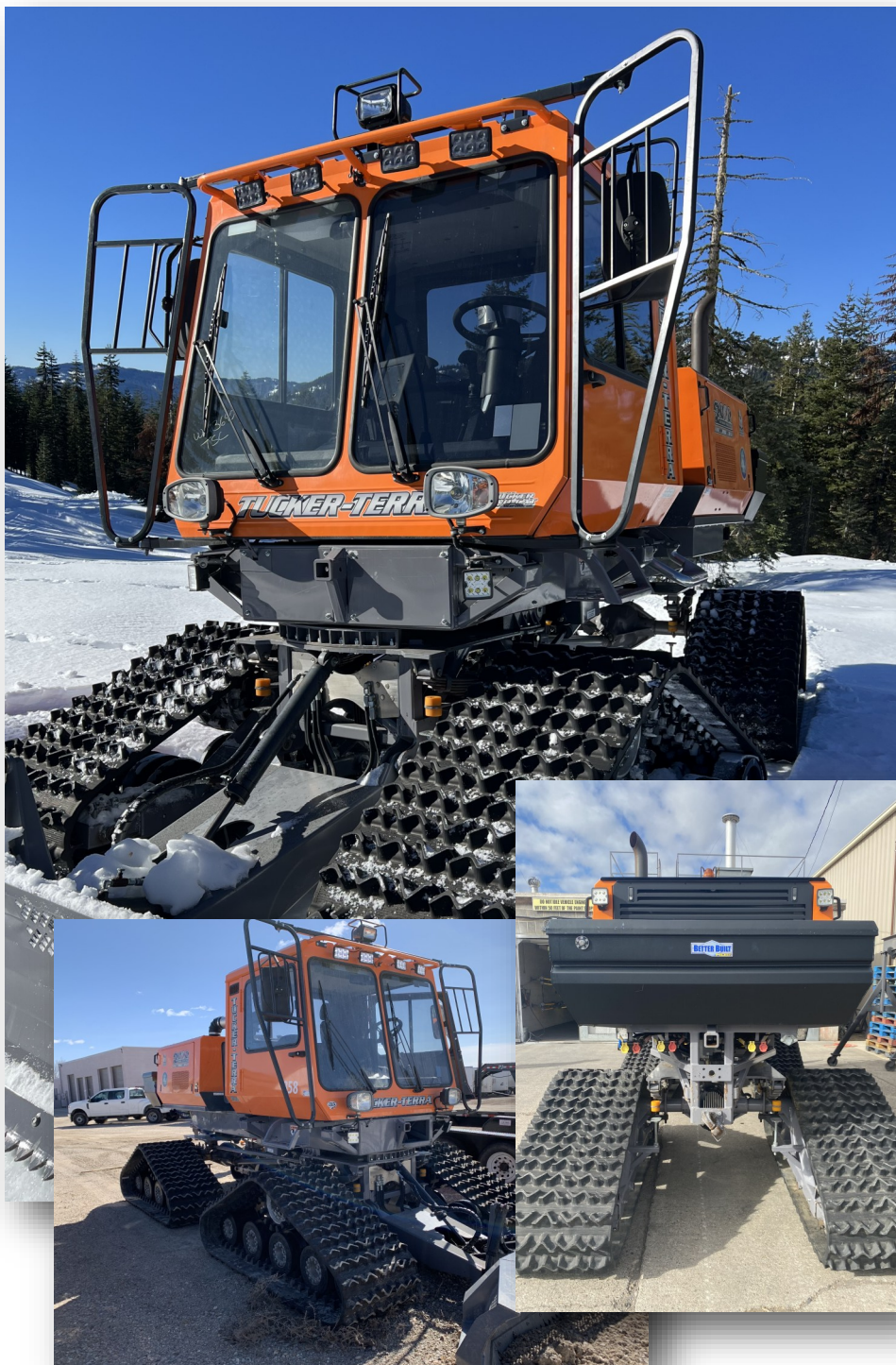


TUCKER SNO-CAT® CORPORATION | 2872 S. PACIFIC HWY (541) 779-3731 | MEDFORD, OR 97501
WWW.SNO-CAT.COM | (866) 766-2281 TF | (541) 779-3731 PH | (541) 779-3735 FX

FOUR-ON-THE-SNOW NEWSLETTER

NO SNOW TOO DEEP...NO ROAD TOO STEEP

Volume 17 Issue 3 · March 2025



2016 2000E-26-6 NOW AVAILABLE

- 1931 HOURS
- 6.7L CUMMINS 173HP
- ALLISON 2500 AUTO TRANSMISSION
- AIR LOCKING DIFFERENTIALS
- 26' RUBBER TRACKS
- 2-PASSENGER CAB
- 8' 6-WAY U-BLADE
- BRUSH GUARDS
- REAR TOOLBOX
- LOWER CORNER LIGHTS
- ROOF MOUNTED SPOTLIGHT W/ REMOTE



TUCKER SNO-CAT® CORPORATION | 2872 S. PACIFIC HWY (541) 779-3731 | MEDFORD, OR 97501
WWW.SNO-CAT.COM | (866) 766-2281 TF | (541) 779-3731 PH | (541) 779-3735 FX

FOUR-ON-THE-SNOW NEWSLETTER

NO SNOW TOO DEEP...NO ROAD TOO STEEP

Volume 17 Issue 3 · March 2025



2021 2000G-38-6 NOW AVAILABLE

- Cummins 6.7L 300HP Tier 4i
- Allison 3000 Transmission
- 38" x 200" Steel Tracks
- 5-Passenger Cab
- HD 12-Way Grooming Blade
- Triple Rear Hydraulics
- Air Lockers on Differentials
- 950 Hours

Click Here to
Learn More



TUCKER SNO-CAT® CORPORATION | 2872 S. PACIFIC HWY (541) 779-3731 | MEDFORD, OR 97501
WWW.SNO-CAT.COM | (866) 766-2281 TF | (541) 779-3731 PH | (541) 779-3735 FX

FOUR-ON-THE-SNOW NEWSLETTER

NO SNOW TOO DEEP...NO ROAD TOO STEEP

Volume 17 Issue 3 · March 2025



CABS & FUEL TANKS NOW AVAILABLE

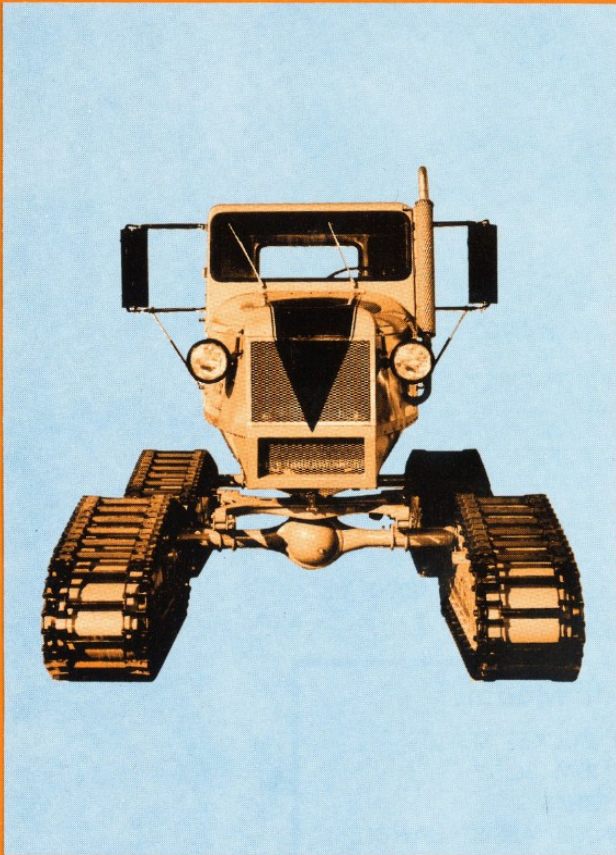
2 sets of pre-owned Tucker Sno-Cat® 2-passenger cabs are now available. Each includes its own fuel tank.

Click Here to
Learn More



TUCKER SNO-CAT® CORPORATION | 2872 S. PACIFIC HWY (541) 779-3731 | MEDFORD, OR 97501
WWW.SNO-CAT.COM | (866) 766-2281 TF | (541) 779-3731 PH | (541) 779-3735 FX

MODEL 4500-A . . . SNO-CATS NEWEST!



*From the
Archives*

The newest Model of the SNO-CATS!

The new wide stance offers exceptional side hill and climb performance.

It has larger differentials than the 400-A series.

Available with a choice of 6 cylinder or V-8 power.

Ask to see the new model perform on your slopes.

TUCKER

SNO-CAT

CORP.

MEDFORD, OREGON

